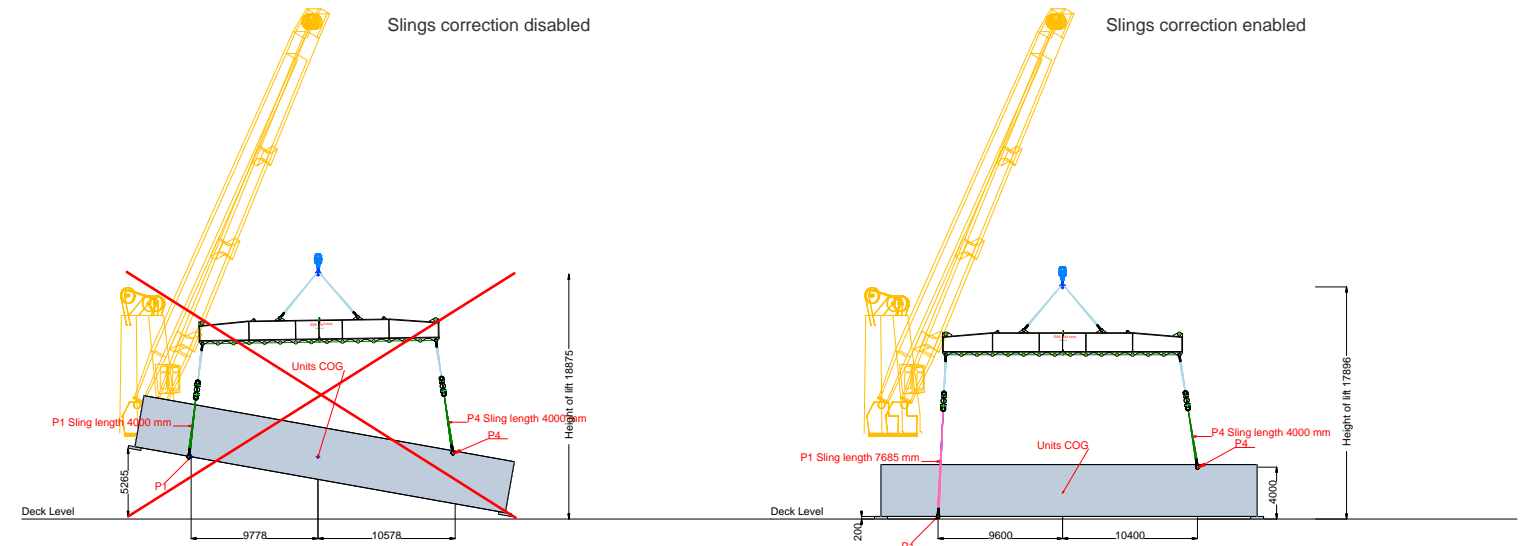
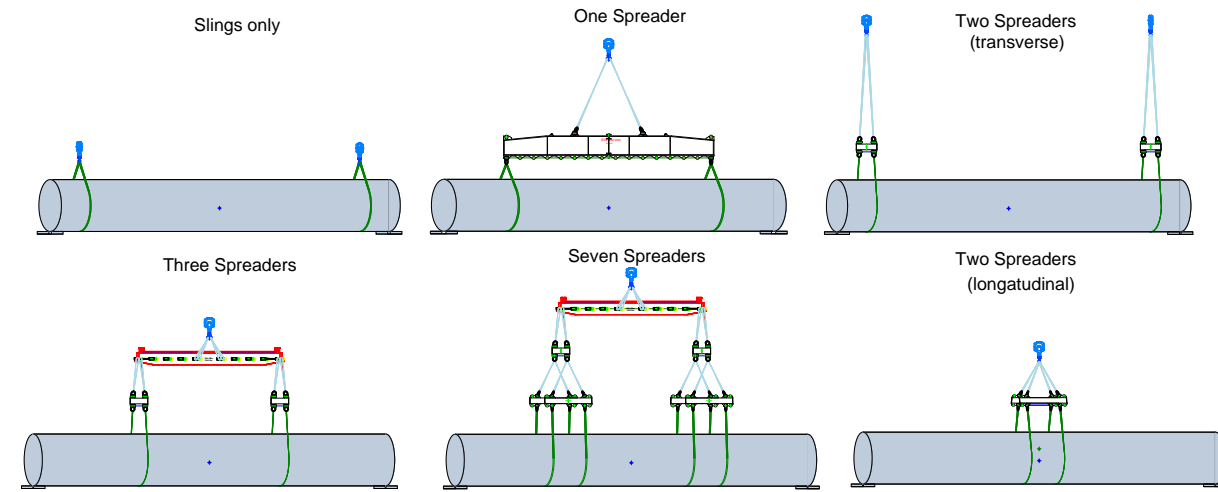


LoadPlanner CAD New in ver. 3.43 Crane simulator and rig drawings

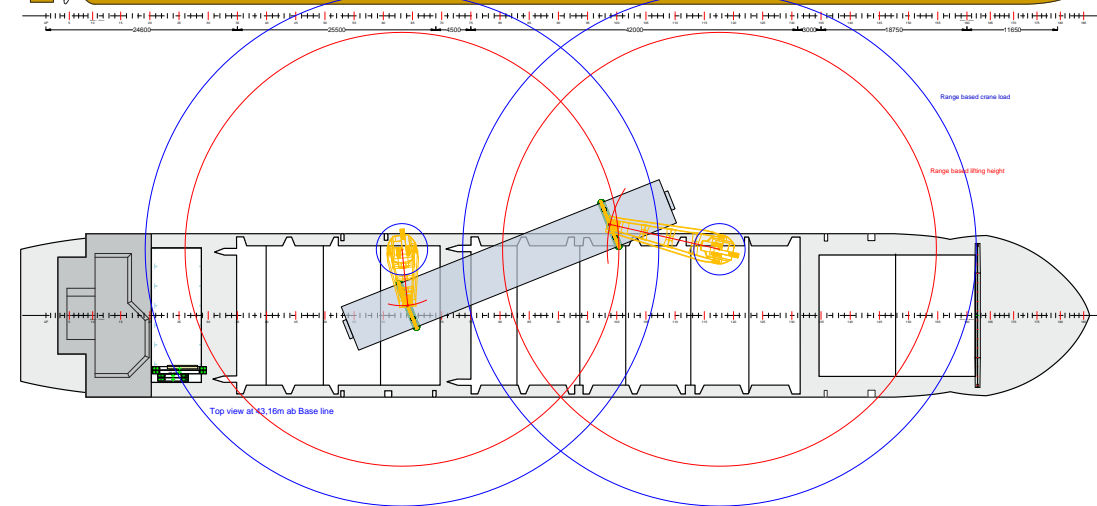
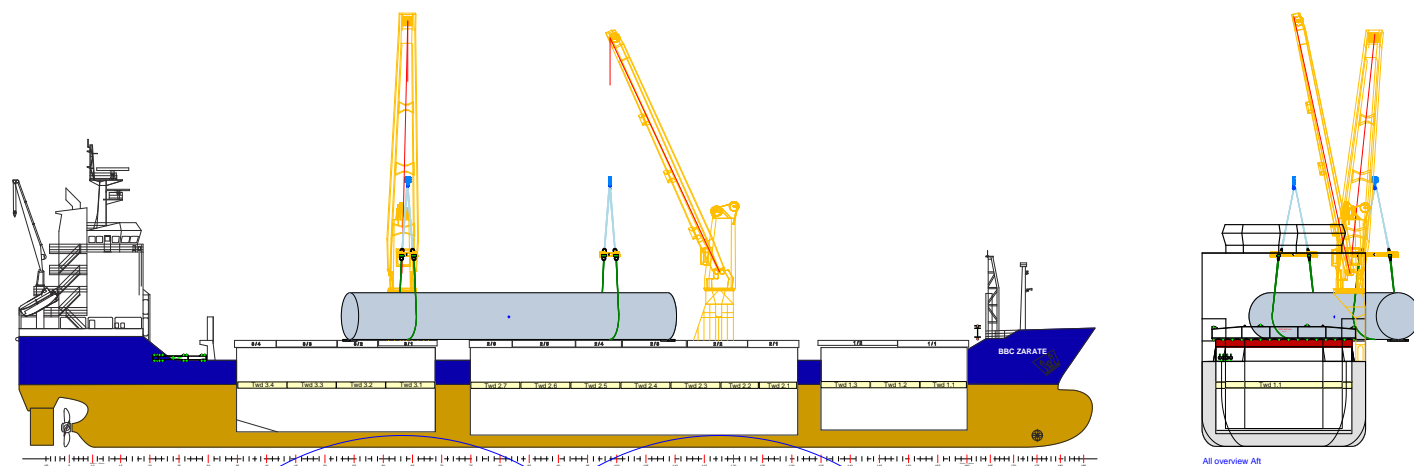
This crane simulator have been quit difficult to build, mostly to have all math correct but also to make it user friendly
The system are build up around 5 standard rig types.

Each rig type can be setup for single or 2 cranes lift

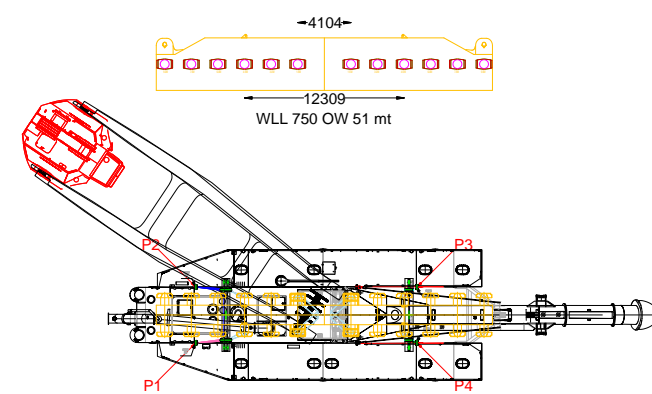
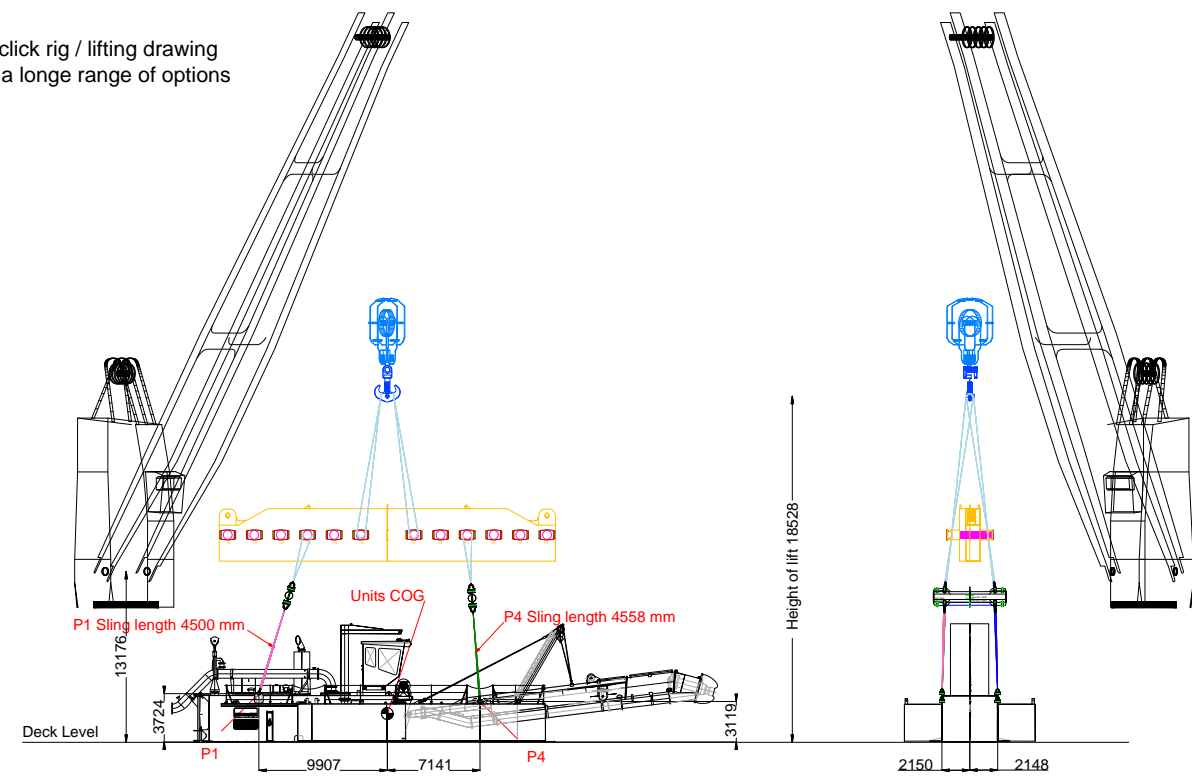


Crane Model Area

Crane can be moved by mouse



One click rig / lifting drawing
With a long range of options



Crane 1 single book	3 spreaders setup	Load mt 187
1 Sling Each 1 mm 8000	Force 81 50 2	2.860 11 1
1 Spreader WLL mt 750	11114 mm 2650 / 2648	200 mt 51
1 Sling Each 1 mm 2700	Force 81 36 78	2.860 7
1 Spreader Each WLL mt 80	Force 81 36 78	100 mt 80
1 Spreader WLL mt 80	Force 81 37 1	100 mt 81 0
1 P1 Sling 1 mm 4500	Force 81 37 1	4.4 1.1 6 slip
1 P2 Sling 1 mm 4500	Force 81 37 1	4.17 1.1 6 slip
1 P3 Sling 1 mm 4500	Force 81 36 6	4.4 1.1 6 slip
1 P4 Sling 1 mm 4558	Force 81 36 6	4.4 1.1 6 slip
1 Spreader WLL mt 42	Force 81 37 1	100 mt 81 0
1 Hook 1 single slip 0	WLL mt 154	100 mt from book 0
1 WLL 1 single slip 0	Force 81 0 0	100 mt from book 0
1 Deck Height of lift	18528 mm	